



loggly

log management in the cloud



Logging as a Service

Loggly provides a log management and data analytics platform for developers and operations engineers.

The World's First Cloud Logging Platform

Today's cloud-based applications are generating massive amounts of valuable logging data. Managing all that data is a real pain, but it contains tons of valuable information that helps a company understand its business. Loggly provides a sweet logging service that scales to a customer's logging needs, and enables application developers and operations engineers to store, search, archive and analyze all their logs with just a few clicks. Click, click, clicky, click.



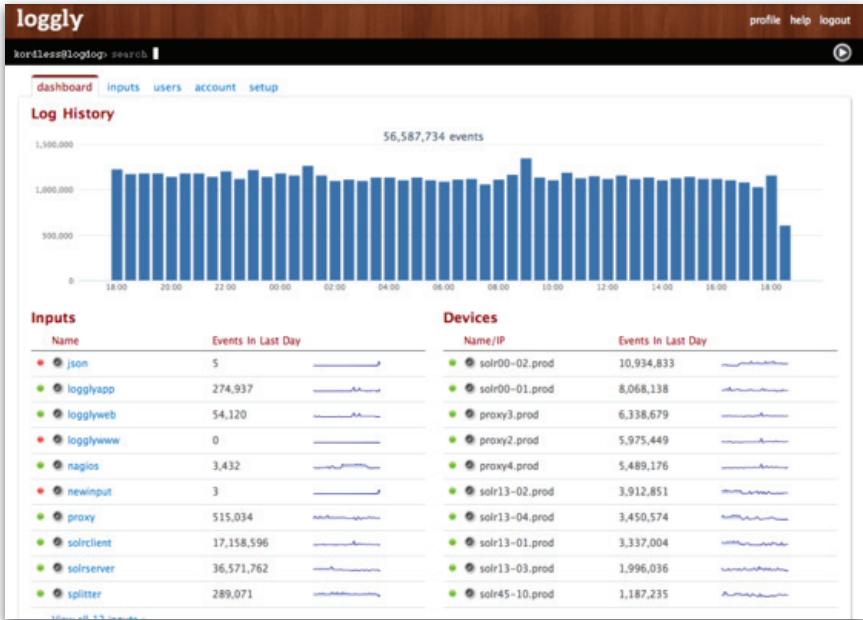
Problem

Collecting and centralizing high volumes of log data from multiple sources for search and analysis can be challenging. Most cloud based deployments run into a challenge of logs being misplaced when a server is decommissioned. Developers and system engineers are constantly tasked with

managing and accessing logs in multiple locations for different deployments.

There is no time to deploy and manage a self-hosted logging solution. Using logs effectively becomes impossible without a centralized logging solution.

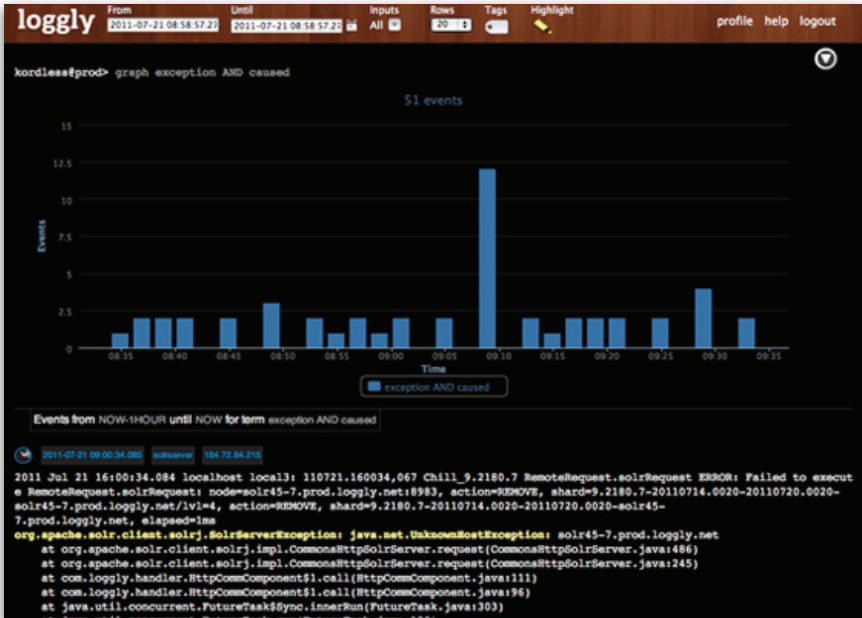




Solution

Loggly takes all of a company's logs from applications, servers, infrastructure, etc., and centralizes them. Our simple UI helps turn logs into actions, allowing for reporting and analytics. Loggly scales with a customer's logging needs, and doesn't require any hardware or software. Loggly provides collection and retention for logs generated from on-premise solutions, IaaS, and platform services. Loggly's service supports data from both syslog-based services and HTTP POSTs. The APIs provide a rich set of calls which allow developers to build custom solutions for their existing offerings and infrastructures.

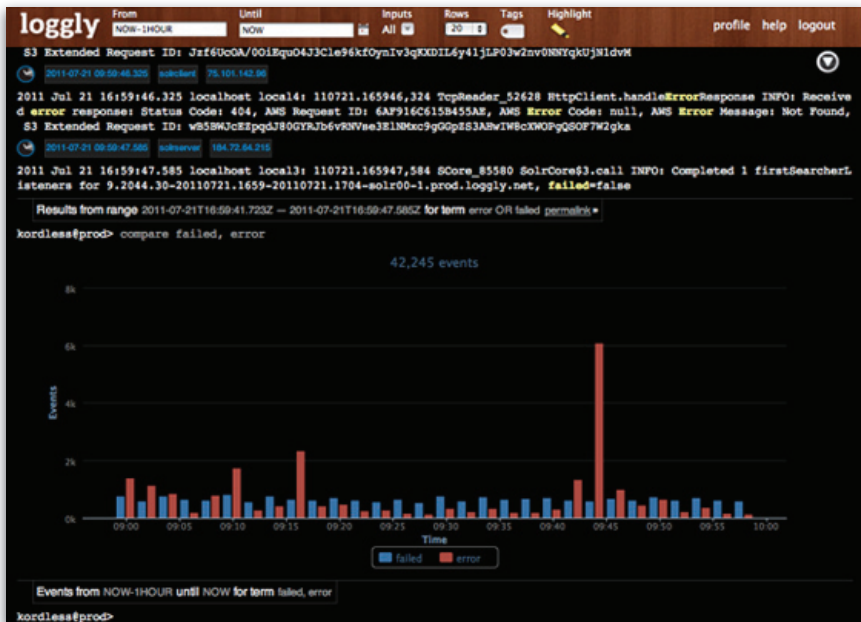




Application Debugging

Loggly provides deployment, performance, and application monitoring by providing features which help a company analyze and inspect the logs their applications are generating, even as they are being developed. Developers can monitor for stack traces, exceptions, and the effects of crazed customer usage. System engineers can monitor for application vulnerability, report on risks to SLAs, and measure network performance impacts from SQL hacking gone wrong. By combining data from multiple sources, Loggly provides a way to do root cause analysis, which improves overall application availability, and warm and fuzzy feelings all around.





Troubleshooting

Loggly makes troubleshooting easy with a powerful search-based query language. Developers can run flexible searches that allow them to focus on a wide range of issues being generated across multiple deployment types. Searches on Loggly can be quickly narrowed to provide a low-level view of issues, then widened again into broader searches to provide root cause analysis. By working quickly with vast amounts of log data, Loggly cuts down on the time it takes to determine an issue and get an application back into a healthy state.

Systems Monitoring

Loggly makes system monitoring easy by providing features to search, detect and investigate events centered around application performance and availability. With an easy-to-use centralized UI, and powerful RESTful APIs, companies can monitor for specific events, trigger alerts based on occurrence,

and run expanded searches to help with resolution. Custom monitoring applications can be quickly created to help analyze exceptions and investigate specific events that happen within an application. Monitoring with Loggly provides flexibility and saves time and money and helps improve application functionality and user experience.

Application Analytics

Loggly provides a powerful platform for searching and reporting on various elements of your infrastructure, such as user behavior, application performance and network capacity. Applications in the cloud follow the agile development process and are constantly evolving, growing in robustness, features and users. Being able to keep track of all these changes is difficult yet critical in order to understand user behavior and make sure application performance and user experience are not compromised. Being able to run relevant analysis and turn knowledge into actions is a critical step in increasing user experience and monetization.

Custom Solutions

Loggly's open APIs enable users to build custom applications leveraging log data. Loggly deals with the ins and outs of managing all of your log files while you can focus on the application logic. Custom dashboards, innovative visualizations, and use-case specific interfaces can be built in record time, making use of the information stored in the logs collected by Loggly. The easy extensibility of Loggly's search interface with custom commands can be used to provide domain knowledge in a quick and easy way, without the need of building an entire custom application.



Loggly's awesome capabilities include:

- Application Debugging
- Troubleshooting and Root Cause Analysis
- Systems Monitoring
- Application Analytics
- Slews of Other Custom Solutions

Loggly Shell Command Basics

- **help**

Displays this list of shell commands

- **search**

`search <search terms>`

Searches for events with the given terms in the current context.

`search 404 .img`

Searches for multiple terms

`search 404 AND .img`

Forces both terms to be found by including the AND operator

`search 404 NOT .png`

Excludes the second term with the NOT operator

- **graph**

`graph <search terms>`

Graphs events matching the given terms in the current context.

- **compare**

`compare <terms1>, <terms2> [,<terms3>, ...]`

Graphs one or more series events, each matching given terms in the current context.

- **exit**

Exits to the dashboard.

